

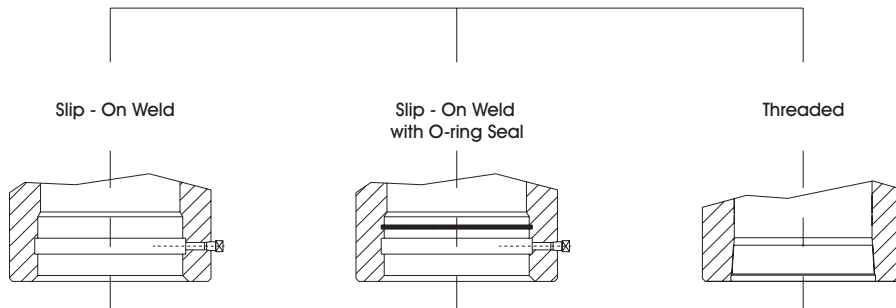
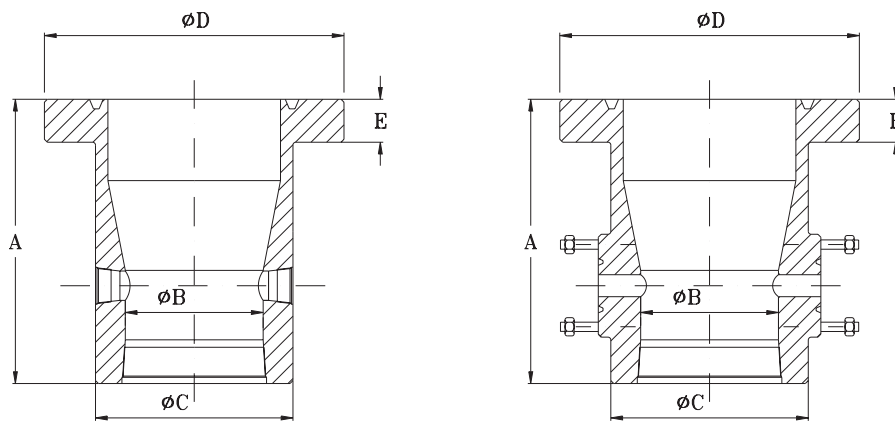
UZ B Casing Heads



Type UZ-B Casing Head housing are furnished, as standard, with two threaded outlets or flanged studded outlets, and have full-opening vertical bores meeting dimensional requirements of the API-6A .

The UZ-B housing is available with API female casing thread forms or slip-on weld casing connection. Slip-on weld version have a 1/2" NPT test port .

The UZ-B Casing Head accepts only type UZ-B casing hanger .



UZ - B Casing Heads



Casing Size (in)	Top Flange		A (in)	B (in)	C (in)	D (in)	E (in)
	Size (in)	Press. (PSI)					
8 5/8	9	2,000	18.89	8.07	10.75	16.53	2.50
		3,000	18.89	8.07	11.75	18.51	2.81
		5,000	18.89	8.07	11.50	19.09	4.06
	11	2,000	19.29	8.07	13.50	20.07	2.81
		3,000	19.29	8.07	14.50	21.45	3.06
		5,000	19.68	8.07	14.50	23.03	4.69
9 5/8	11	2,000	19.29	9.35	13.50	20.07	2.81
		3,000	19.29	9.35	14.50	21.45	3.06
		5,000	19.68	9.35	14.50	23.03	4.69
10 3/4	11	2,000	19.29	10.23	13.50	20.07	2.81
		3,000	19.29	10.23	14.50	21.45	3.06
		5,000	19.68	10.23	14.50	23.03	4.70
11 3/4	13 5/8	2,000	19.68	11.22	15.75	22.04	2.94
		3,000	19.68	11.22	16.50	24.01	3.44
		5,000	19.68	11.22	18.94	26.57	4.44
12 3/4	13 5/8	2,000	19.68	12.20	15.75	22.04	2.94
		3,000	19.68	12.20	16.50	24.01	3.44
		5,000	19.68	12.20	18.94	26.57	4.44
13 3/8	13 5/8	2,000	19.68	12.87	15.75	22.04	2.94
		3,000	19.68	12.87	16.50	24.01	3.44
		5,000	19.68	12.87	18.94	26.57	4.44
13 3/8	16 3/4	2,000	20.86	12.87	19.50	26.96	3.31
		3,000	20.86	12.87	20.00	27.75	3.94
		5,000	20.86	12.87	21.88	30.31	5.13
16	16 3/4	2,000	20.86	15.55	19.50	26.96	3.31
		3,000	20.86	15.55	20.00	27.75	3.94
		5,000	20.86	15.55	21.88	30.31	5.13
18 5/8	21 1/4	2,000	21.26	18.74	24.00	32.08	3.88
		5,000	21.26	18.74	29.88	38.97	7.12
	20 3/4	3,000	21.26	18.74	24.50	33.66	4.75
20	21 1/4	2,000	21.26	19.13	24.00	32.08	3.88
		5,000	21.26	19.13	29.88	38.97	7.12
	20 3/4	3,000	21.26	19.13	24.50	33.66	4.75